

MONTHLY MEMBERSHIP PROGRESS REPORT

LOCATION INDIA

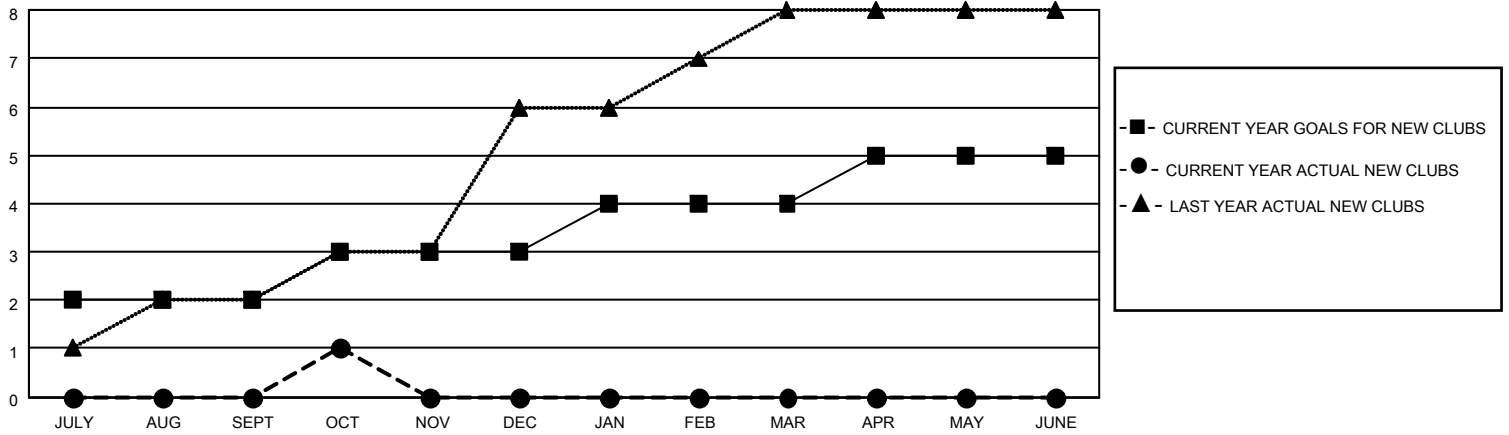
District 321A1

Results as of: 10/31/2021

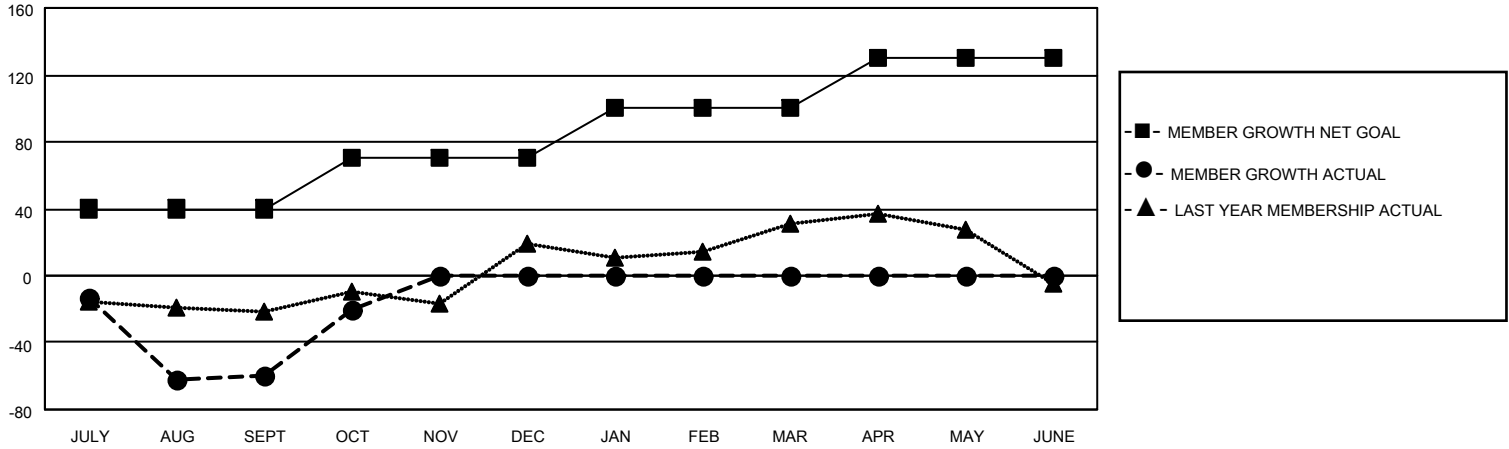
Clubs			
RESULTS FOR 2021-2022			
QUARTER	NEW CLUB GOAL	NEW CLUBS	DROPPED CLUBS
JULY/AUG/SEPT	2	0	5
OCT/NOV/DEC	1	1	0
JAN/FEB/MAR	1	0	0
APR/MAY/JUNE	1	0	0

Members			
RESULTS FOR 2021-2022			
QUARTER	MEMBER GROWTH NET GOAL	MEMBER GROWTH ACTUAL	DROPPED MEMBERS ACTUAL (including transfers)
JULY/AUG/SEPT	40	62	108
OCT/NOV/DEC	30	42	1
JAN/FEB/MAR	30	0	0
APR/MAY/JUNE	30	0	0

GOALS AND ACTUAL NEW CLUBS CUMULATIVE



GOALS AND ACTUAL MEMBERS CUMULATIVE



DROPPED CLUBS: 5

14 CLUBS OF 58 ADDED 1 OR MORE NEW MEMBERS

GENDER DISTRIBUTION

MALE	1,141 (68.61%)
FEMALE	522 (31.39%)
NON BINARY	0 (0.00%)
PREFER NOT TO ANSWER	0 (0.00%)

DROPPED MEMBERS

DECEASED	3
CLUB CANCELLED	42
OTHER	64
TOTAL	109

[CLICK HERE FOR CUMULATIVE MEMBERSHIP DATA](#)

TOTAL FAMILY UNIT MEMBERS	882
FAMILY MEMBERS PAYING HALF DUES	562